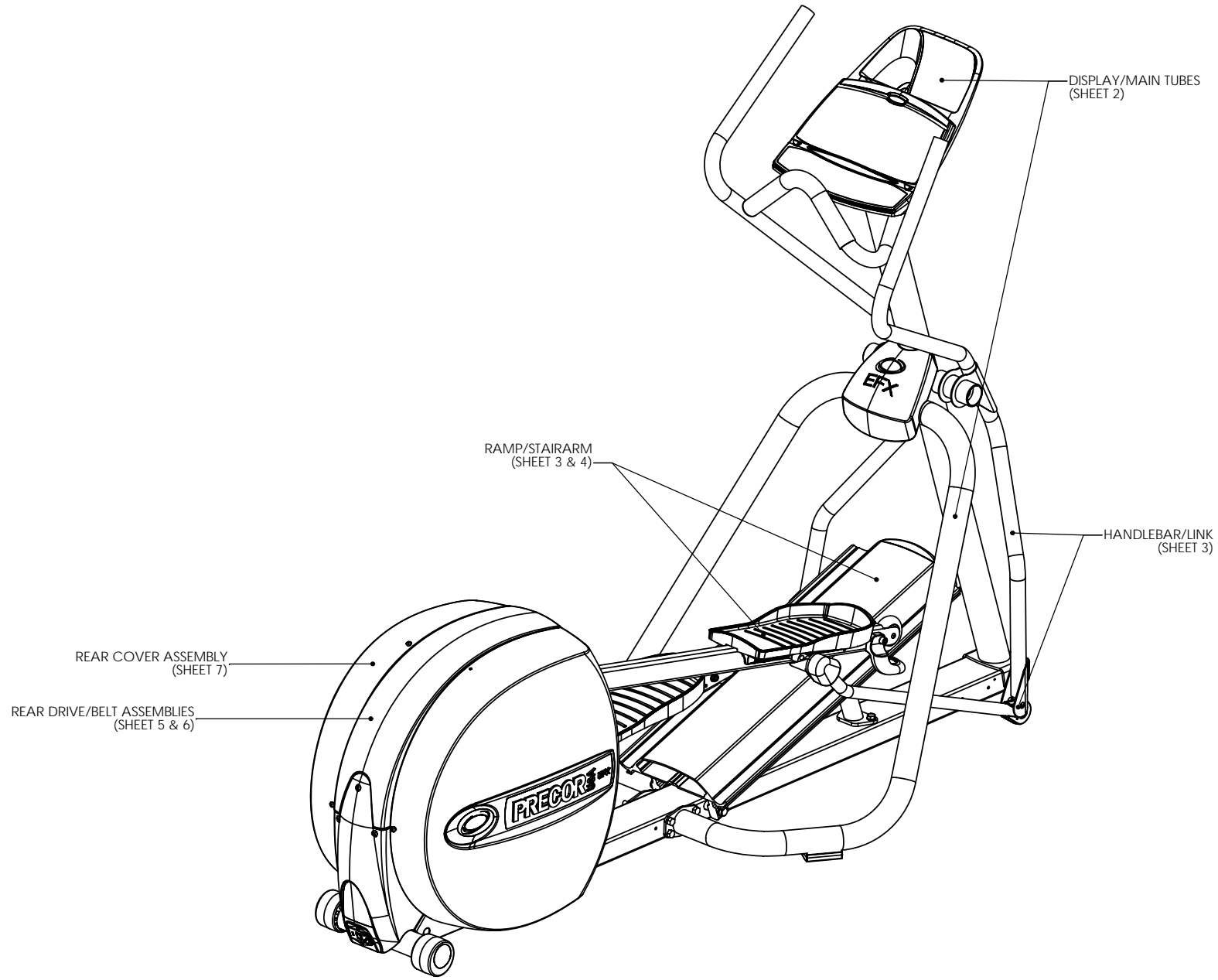


5.19 (serial code APLK)

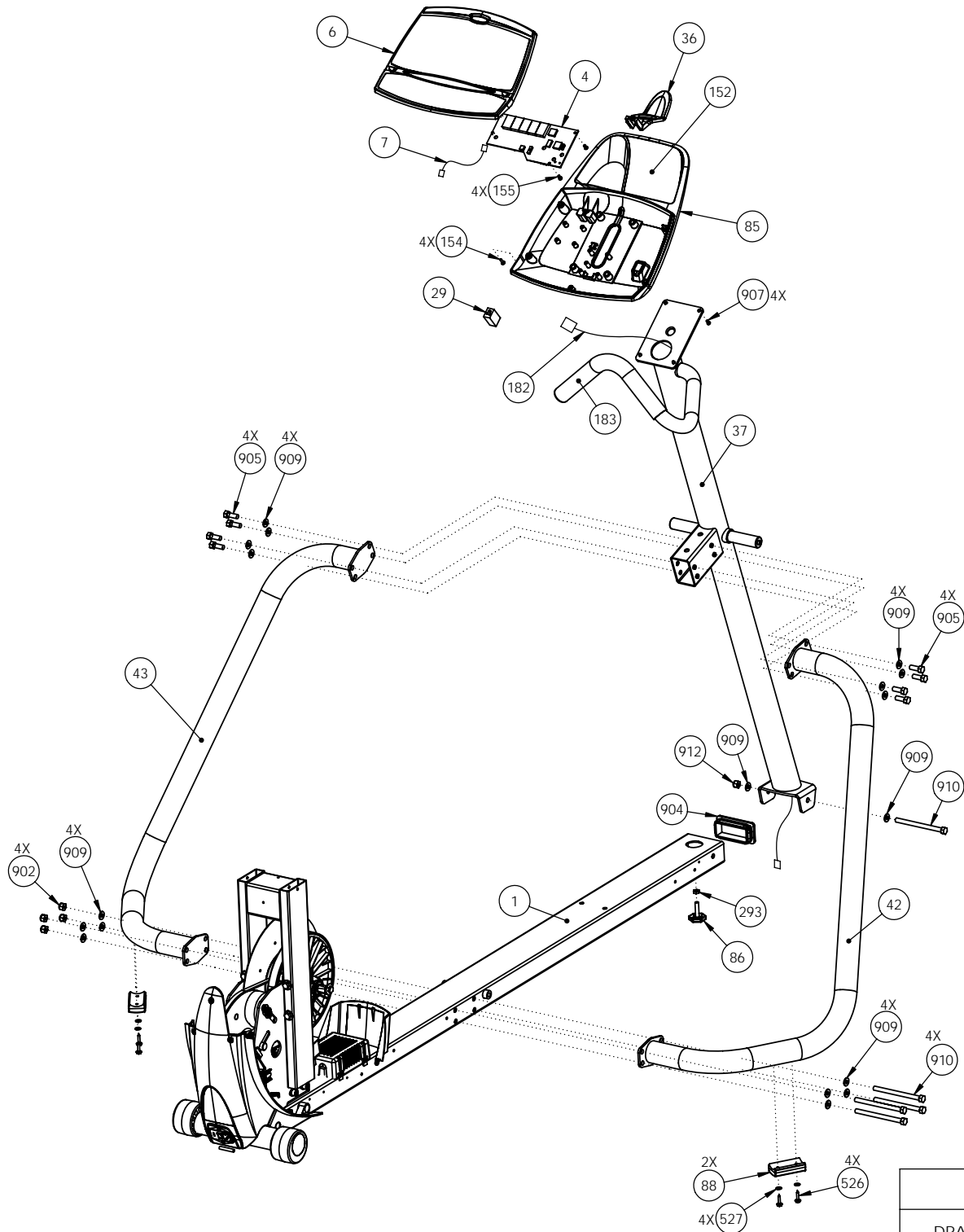
Part Number	Description	Bubble Number
47687-103	WELDMENT, LOWER FRAME, RETAIL EFX,	1
46920-108	ASSY, UPCA & SW, 5.19 TD	4
47784-101	DISPLAY, ASSEMBLY, 5.19	6
44905-012	ASSY,CBL,MOD,8P8C,1-1,12"	7
44905-072	ASSY,CBL,MOD,8P8C,1-1,72"	8
47495-102	PCA, EFX, LOWER, SERIAL W/O LIFT	9
47915-501	ASSY, PCA & SW, EFX 5.33, LOWER	9.01
44440-023	ASSEMBLY, REED SWITCH, 23"	11
46863-101	ASSY, HANDLEBAR, LEFT, 5.19	21
46863-102	ASSY, HANDLEBAR, RIGHT, 5.19	22
10392-111	POWER CORD,125VAC,10A,8.0 FT	23
12167-102	PWR ENTRY MOD & FILTER,250VAC,3A	24
45201-202	IC,CPU,PGMD,EFX5.33,LWR,V2.02	27
11415-101	COUPLER,MOD,8P8C,INLINE	29
43329-102	WIRE FORM,PLASTIC,COMMERCIAL	36
46833-103	WELDMENT, DISPLAY TUBE, 5.19, STON	37
44318-106	WELDMENT, MAIN TUBE, RIGHT, RETAIL	42
44318-105	WELDMENT, MAIN TUBE, LEFT, RETAIL E	43
48639-101	ASSY, RAMP, 5.19	44
44333-103	ASSY, RAMP, LIFT BRKT, RETAIL EFX	45
46855-104	WELDMENT,STAIRARM RAIL,5.19, EFX,RH	47
46855-103	WELDMENT,STAIRARM RAIL,5.19, EFX,LH	48
46922-101	ASSY, STAIRARM WHEEL, CONSUMER EFX	49
48337-101	ASSY, STAIRARM WHEEL, CONSUMER EFX,	49
37314-108	PEDAL, FOOT	50
46996-102	ASSY, LOWER LINK, 5.19	54
44363-103	ASSEMBLY, CRANK ARM, RETAIL, W/PRES	58
10217-130	BELT, DRIVE, POLY V (DAYCO 27-0628)	62
44301-101	ASSY, STEP-UP PULLEY,RETAIL EFX,5X3	63
10217-131	BELT, DRIVE, POLY V (DAYCO 27-0627)	64
47888-101	ELECTROMAGNET,EC BRAKE,.093" 2 POS	66
47549-101	WELDMENT, DRIVE, EFX, PAINTED	75
43606-117	ASSY, EFX COVER, RIGHT RETAIL, STON	76
43606-116	ASSY, EFX COVER, LEFT, 5.19, STONE	77
44479-102	ASSY, FRONT PANEL, EFX COVER, REAR,	78
43707-103	SUPPORT, REAR COVER,STONE GRAY	79
46839-102	TRANSITION, REAR COVER, EFX, STONE	80
47891-101	LABEL, EFX COVER, REAR, PRECOR BLUE	81
47355-101	LABEL, EFX LOGO, REAR COVER, DURO-L	82
47520-101	LABEL, WIRING DIAGRAM, 5.19, STONE	83
43179-104	BACKPLATE, DISPLAY, COMMERCIAL ,STO	85
11406-103	FOOT, LEVELER, RUBBER BASE, 1.5"LG	86
37534-102	FOOT, ADJUSTABLE	87
37535-102	FOOT, FIXED	88
38301-101	ASSY,PIVOT BLOCK	89
44480-103	ASSY, TOP PANEL, EFX COVER, REAR	90
12223-250	FUSE,TIME-DELAY,2.5A,250V,5X20MM	93
12223-400	FUSE,TIME-DELAY,4A,250V,5X20MM	93
44300-103	ASSY,DRIVE INPUT,RETAIL	97
38320-103	IDLER,PULLEY	98

12153-101	FERRITE,CLAMP-ON,RND CABLE,28 MATL	102
47150-102	ASSY, EFX COVER, CENTER, 5.19, STON	103
12500-101	CLIP, TREE-LOK, STD. BALL END	104
47519-103	LABEL, ACCESSORY TRAY, ENG, 5.19	152
PMKN016-050	SCREW,TCS,#8X1/2,PHIL,BLK ZN,TYPE25	154
MGCN016-038	SCREW,MCH,8-32X3/8,PANHD,PHIL,	155
38580-107	GRIP,HANDLEBAR,27.00" LONG	156
44905-060	ASSY,CBL,MOD,8P8C,1-1,60"	182
38580-114	GRIP,HANDLEBAR, 14" LONG	183
10123-105	CABLE TIE, 6 LONG,WHITE,NYLON	184
47718-101	HOLE PLUG, PLASTIC .875 X.03-.08	185
11476-102	PIN, RING, LOCKOUT	202
CBKN019-050	SCREW,SKHD,#10X32X0.50,BLK ZN,LK	203
WATNN020-002	WASHER, LK-INT, #10, ID=.200,	204
47546-101	LABEL, CAUTION	251
10136-103	CLIP,U TYPE, TINNEMAN, 1/4-20	252
48340-101	SPACER, RAIL, URETHANE	276
TENE006-010	SCREW,BTTNHD,SKT C/S,M6X1X10MM	277
KDKN031-025	LOCKNUT, HALF, 5/16-18,BLK ZN	278
KAKN031-016	LOCKNUT,HALF, 5/16-18,BLK ZINC	279
RAKN031-200	SCREW,SHLDR,3/8 X 2 ,HEX	280
HAKN031-200	SCREW, HEX HD, 5/16-18 X 2, BLK ZN	281
TAKN031-200	SCREW,BTHD,5/16-18X2,BLK ZN	281
46963-103	HOOK, STAIR RAIL, 5.19, LH	282
46963-104	HOOK, STAIR RAIL, 5.19, RH	283
47773-101	HOOK, STAIRARM, 5.33, RH	283
WBKN031-007	WASHER, FLT, 5/16, ID=.344,	284
CAKN031-200	SCREW,SKHD,5/16-18X2,BLK ZN,LK	285
47024-101	COVER, LINK, REAR, 5.19	286
PGKN016-075	SCREW,S/T,#8X3/4,TRS,PHIL,BLK	287
RAKN038-063	SCREW,SHLD,3/8 X 5/8 ,HEXSC,BLK ZN	288
WAAKN050-006	WASHER,FLT,1/2X1.00X.063,BLK ZN	289
WAGNN050-001	WASHER,WAVE (SSR-0075)	290
47023-101	COVER, LINK, FRONT, 5.19	291
MGKN013-075	SCREW,MCH,6-32X3/4,PANHD,PHIL,BLK Z	292
KPCN031-019	NUT,HEX THIN,5/16-18,ZN	293
48340-102	SPACER, RAIL ,URETHANE, RED	295
50593-101	ASSY, 5.19 RAMP REPLACEMENT KIT, AL	299
AAHN063-003	RING, RETAINER, 5/8, EXTERNAL	301
10178-112	BUSHING, SNAP	302
12515-101	CLAMP, CABLE, BLACK, RELEASABLE ON	305
33984-101	LABEL, SAFETY, GROUND SYMBOL	306
HAKN038-100	SCREW,HEXHEAD,GRADE2,3/8-16X1,BLKZN	307
46848-102	COVER, RAMP FRONT, 5.19, STONE GRAY	308
CAKN031-075	SCREW,SKHD,5/16-18X0.75,BLK ZN,LK	309
TFKN025-075	SCREW,BTHD,1/4-20X3/4,BLK ZN	314
PKCN019-075	SCREW,S/T,#10X.75,WSHHXHD,ZN	315
PANKN025-050	SCREW,S/T,#1/4-20X1/2,PANHD,PHIL,BZ	316
PNKN025-050	SCREW,PANHD,PHIL,TYPEF,1/4-20X.5,BZ	316
RAKN038-125	SCREW,SHLD,3/8X1-1/4,HEXSC,BLK ZN	317
RANN038-050	SCREW,SHLD,3/8 X 1/2 ,HEXSC	317
WBKN038-007	WASHER, FLT, 3/8, ID=.406, BLK ZN	318

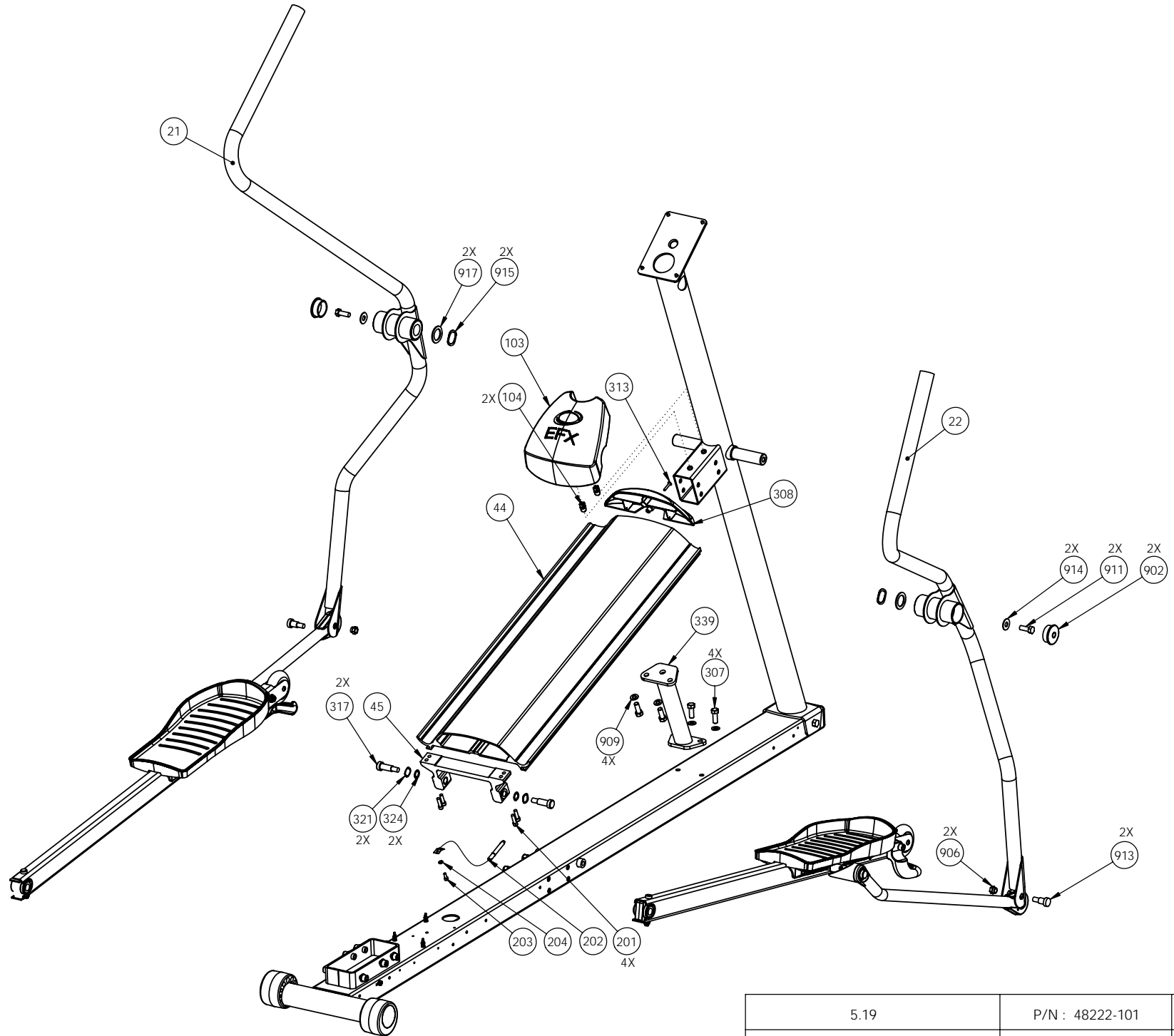
WAGNN062-001	WASHER, WAVE, .87 OD X .62 ID	320
WAGNN048-001	WASHER,WAVE (SSR-0062)	321
WATNN020-002	WASHER, LK-INT, #10, ID=.200,	322
WNNN051-002	WASHER,SHIM,1/2X3/4X.020THK	324
WNNN063-001	WASHER, FLT, 5/8X.880X.010	325
WRCN031-009	WASHER,GRADE 8,3/8,13/32 ID,13/16OD	327
46869-102	WELDMENT, RAMP SUPPORT, 5.19, PAINT	339
11245-103	BUSHING,HEAVY DUTY PILLOW BLK	351
37385-101	BRACKET, TENSIONER	354
37855-103	TAB, LOCKING	355
47553-101	RETAINER, SENSOR	356
HACN025-250	SCREW,1/4-20X2-1/2,HEX,GR 2,ZN	359
HCRN031-075	SCREW,HEX,GR 5,5/16-18X3/4,SIL ZN	360
HRWE031-075	SCREW, SERRATED FLANGE HD, HEX, NYL	361
KGCN031-027	LOCKNUT,STARWASHER,5/16-18,1/2	362
MACN019-200	SCREW,HEX WASHER HEAD, #10-32 X 2.0	363
WAGSN072-001	WASHER, WAVE .1.05 O.D., .755	365
WNNN032-009	WASHER,FLT, .321X1.00X.090 THK	367
WBANN034-013	WASHER,FLAT,ID=11/32,OD3/4,TH=.125,	368
WNNN076-001	WASHER,SHIM, .75X1.00X.010 THK	369
WRCN031-009	WASHER,GRADE 8,3/8,13/32 ID,13/16OD	370
HCCN031-400	SCREW, HEX HD, GRADE 5, 5/16-18	371
WHCN031-006	WASHER, .330 ID X.875 OD X.06 THK,Z	372
12531-101	STANDOFF,PCB SUPPORT,BLIND HOLE,SNA	391
37436-101	LABEL, CHASIS NEUTRAL	401
44435-021	ASSY,CBL,2-COND,18AWG,21",QK DISC	402
44437-013	ASSY, CABLE, GND,RING/QK DISC,13"	403
MNCN013-031	SCREW, MCH,6-32X5/16,FLTHD,PHIL	404
PKCN019-075	SCREW,S/T,#10X.75,WSHHXHD,ZN	526
WBCN019-005	WASHER, SAE, #10, ZN	527
12529-101	SPACER, #10 X 1/2" LONG, ZN	551
47774-101	COVER, LPCA, 5.X3	552
PKCN019-125	SCREW,S/T,#10X1.25,WSHHXHD,ZN	553
WATNN020-002	WASHER, LK-INT, #10, ID=.200,	554
46827-103	KIT, HARDWARE, 5.19	901
11382-103	CAP,TUBE,PLASTIC,ROUND,1.750 INCH	902
10186-102	WRENCH, ALLEN, 1/4	903
11311-101	ENDCAP, REC TUBE, BLACK PLASTIC, 50	904
HAKN038-100	SCREW,HEXHEAD,GRADE2,3/8-16X1,BLKZN	905
47146-102	LINK ARM SHOULDER NUT 1/2" (3/8-16	906
MGKN025-050	SCREW, PANHD, 1/4-20 X .5, BLK ZN	907
TFKN025-075	SCREW,BTHD,1/4-20X3/4,BLK ZN	908
WBKN038-007	WASHER, FLT, 3/8, ID=.406, BLK ZN	909
HAKN038-500	SCREW,HEXHEAD,GRD2, 3/8-16X5,BLK ZN	910
HCRN038-100	SCREW,HEX,GR 5,3/8-16X1,SIL ZN	911
KDKN038-044	LOCKNUT,FULL,3/8-16,.433,BLK ZN	912
RAKN038-125	SCREW,SHLD,3/8X1-1/4,HEXSC,BLK ZN	913
WABCN041-005	WASHER, FEN, 3/8, ID=.406,	914
WAHNN105-002	WASHER, WAVE, 1.351 OD X 1.051	915
WALKN050-013	WASHER, SPLIT LOCK 1/2,BLK ZN	916
WNKN102-008	WASHER,FLT,1 1/2X1.015X.075,BLK ZN	917
48143-102	KIT, LITERATURE, 5.19	999



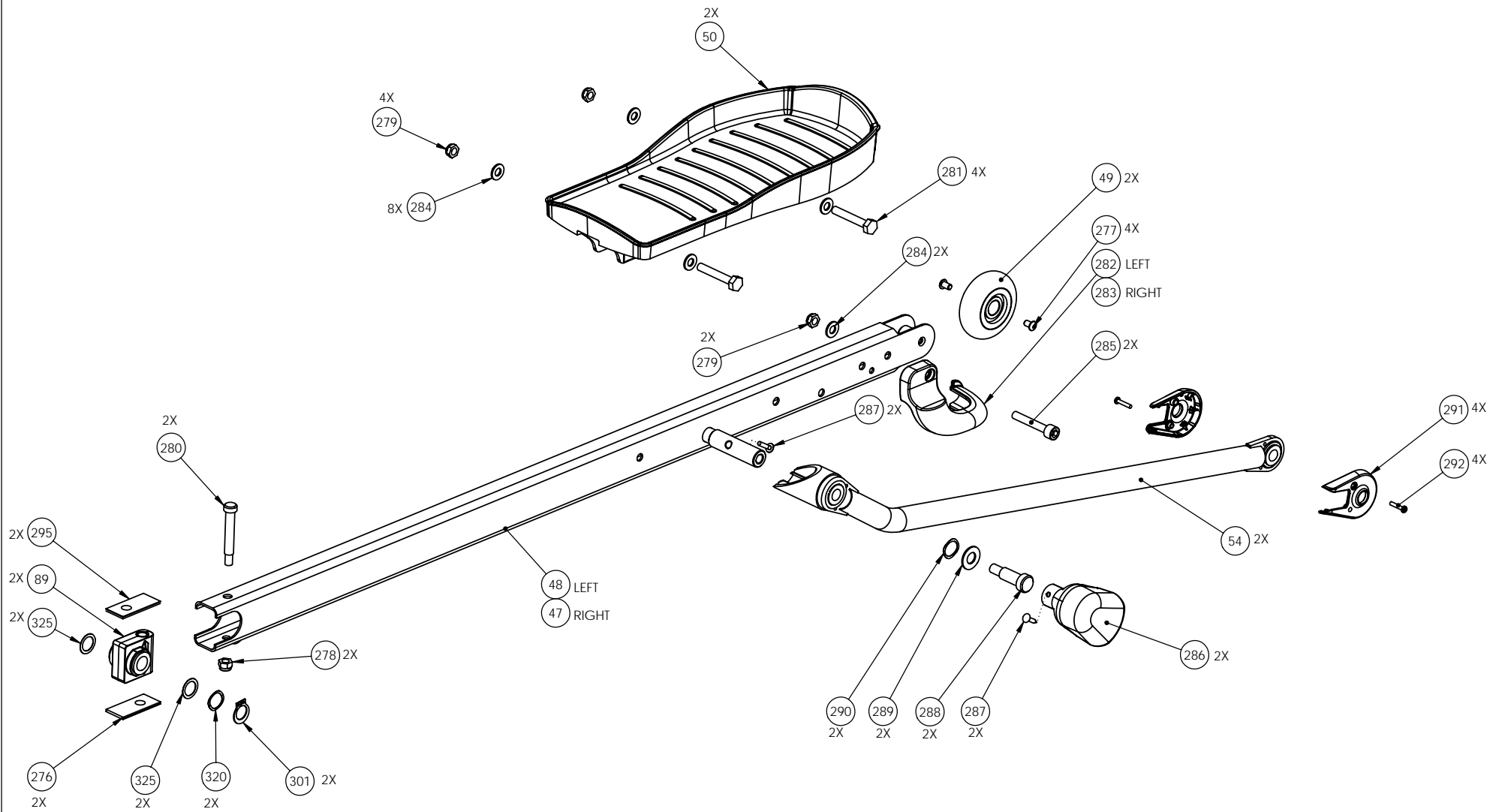
5.19	P/N : 48222-101	SUBREV : G
DRAWN BY : GRANADOSIN	DATE : 11.30.05	SHEET 1 OF 7



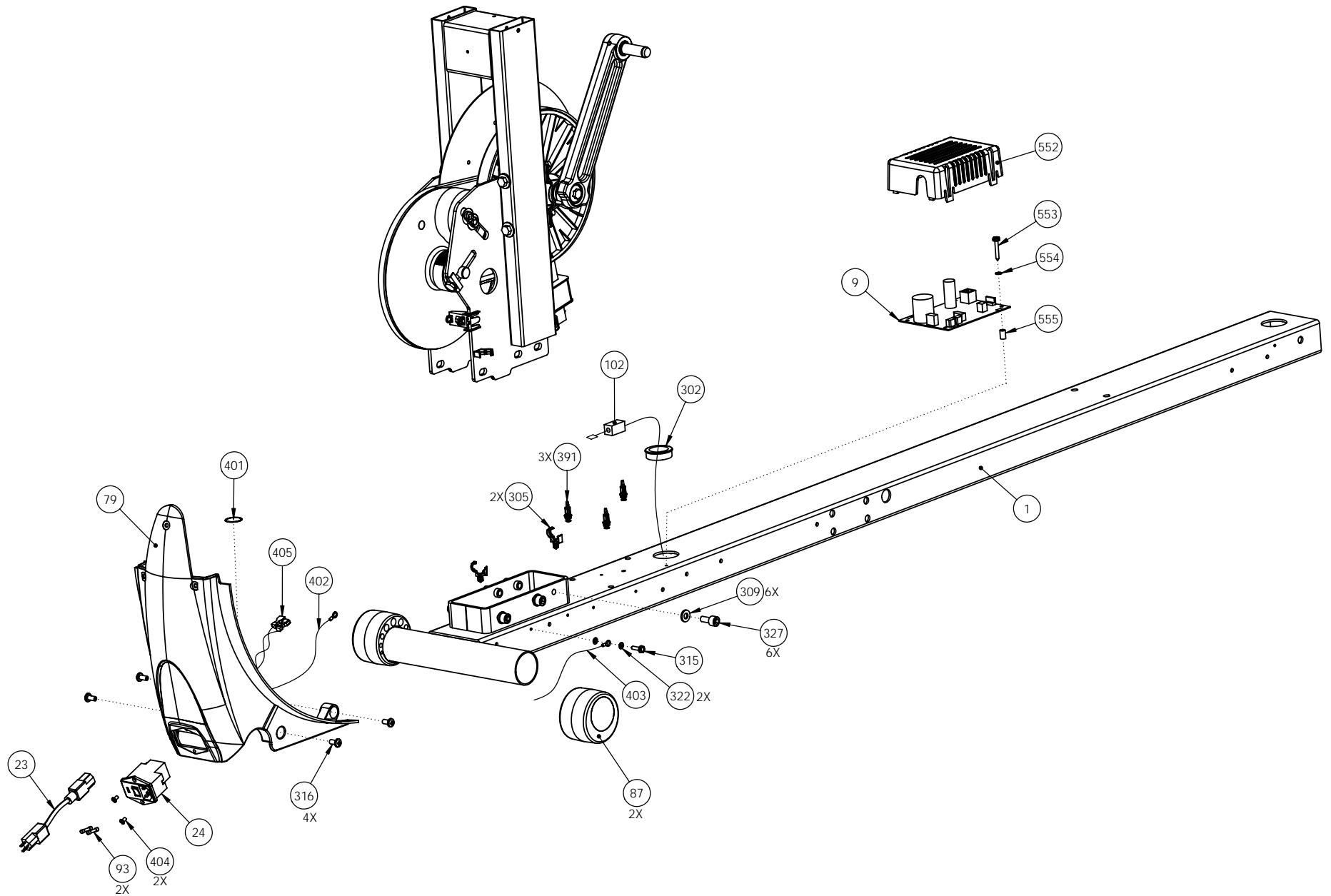
5.19	P/N : 48222-101	SUBREV : G
DRAWN BY : GRANADOSIN	DATE : 11.30.05	SHEET 2 OF 7



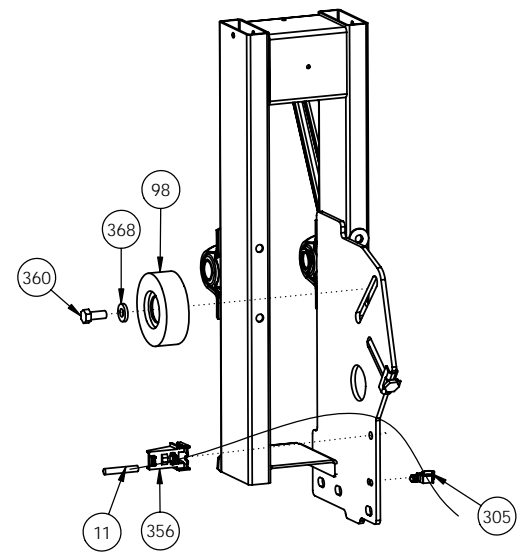
5.19	P/N : 48222-101	SUBREV : G
DRAWN BY : GRANADOSIN	DATE : 11.30.05	SHEET 3 OF 7



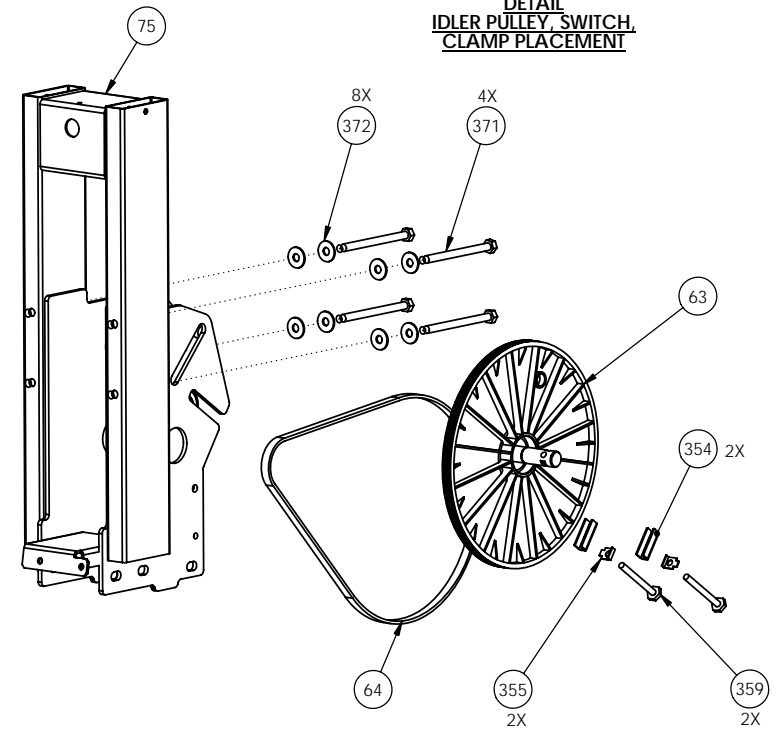
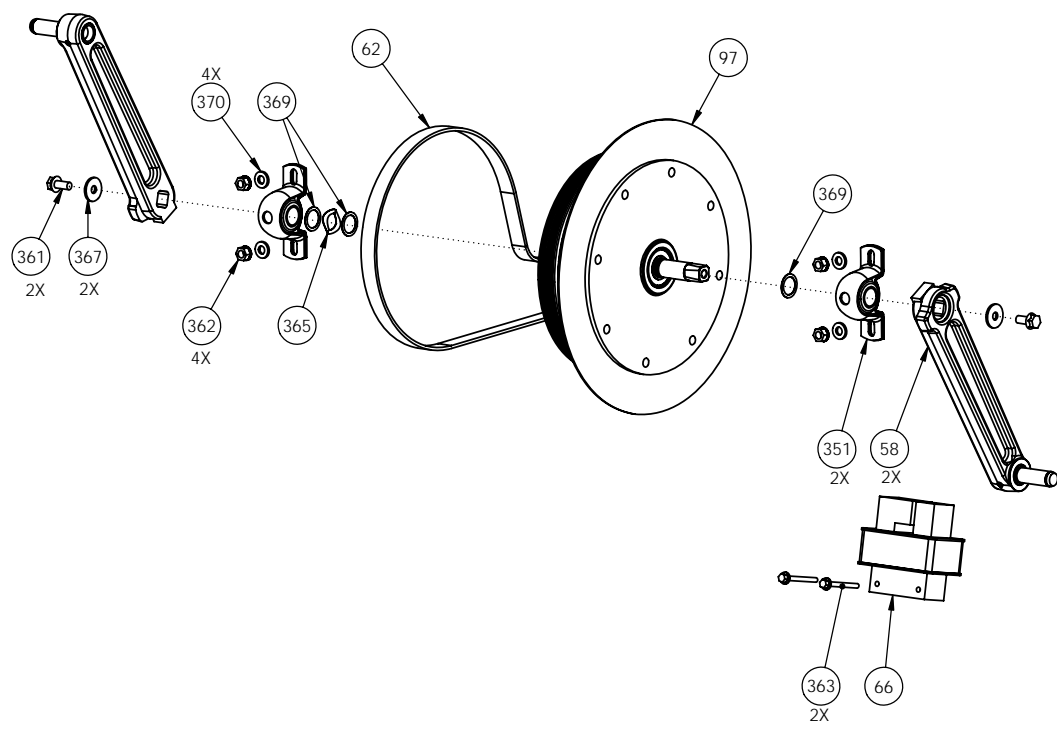
5.19	P/N : 48222-101	SUBREV : G
DRAWN BY : GRANADOSIN	DATE : 11.30.05	SHEET 4 OF 7



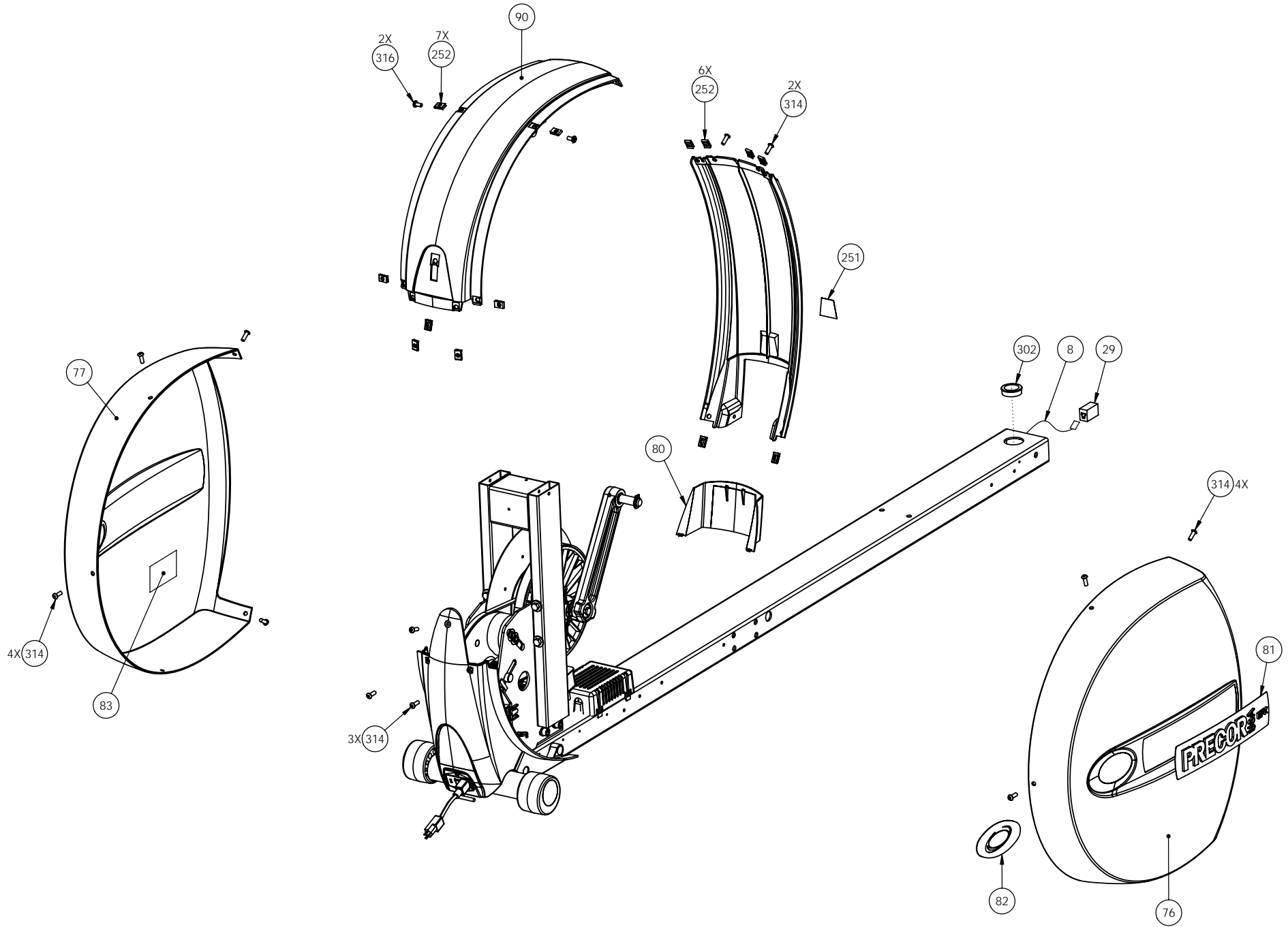
5.19	P/N : 48222-101	SUBREV : G
DRAWN BY : GRANADOSIN	DATE : 11.30.05	SHEET 5 OF 7



**DETAIL
IDLER PULLEY, SWITCH,
CLAMP PLACEMENT**



5.19	P/N : 48222-101	SUBREV : G
DRAWN BY : GRANADOSIN	DATE : 11.30.05	SHEET 6 OF 7



5.19	P/N : 48222-101	SUBREV : G
DRAWN BY : GRANADOSIN	DATE : 11.30.05	SHEET 7 OF 7